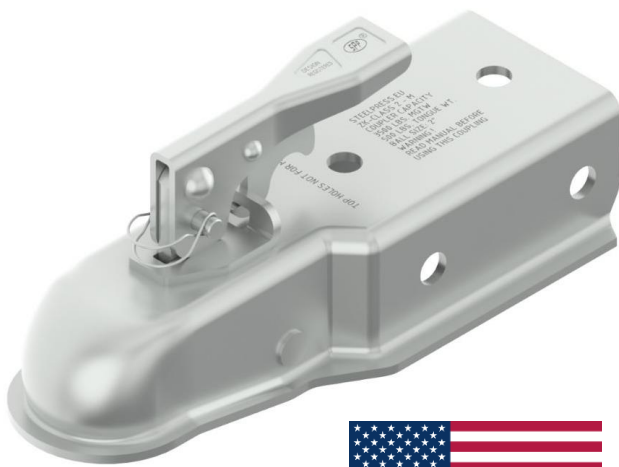




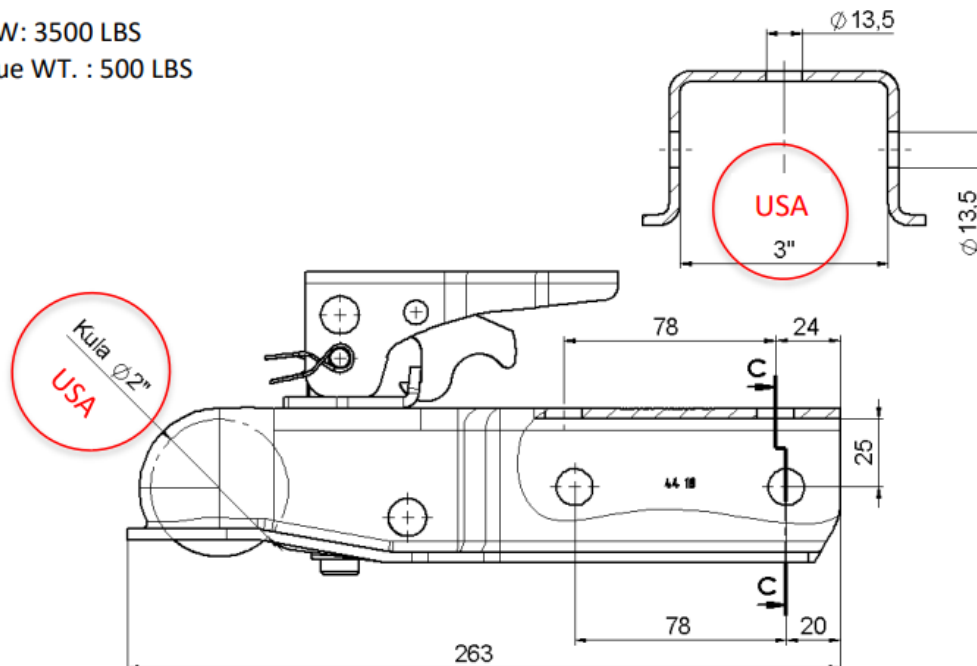
## NEWSLETTER 03.2025

### 1. COUPLING HEAD ZK-CL2-M



- compatible with a **2"** diameter ball
- high corrosion resistance ensured by the use of galvanized steel, guaranteeing durability for years
- resistance to cracking
- low unladen weight
- interchangeable components of the hitch mechanism, including the clamp, allow for an extended product life cycle
- the available connection allows mounting on a **drawbar with a diameter of 3"**
- guarantee of the highest quality - the ZK-CL2-M head has successfully passed the tests of the renowned laboratory **TESTLINK SERVICES, INC.** meeting the highest safety standards

MGTW: 3500 LBS  
Tongue WT. : 500 LBS





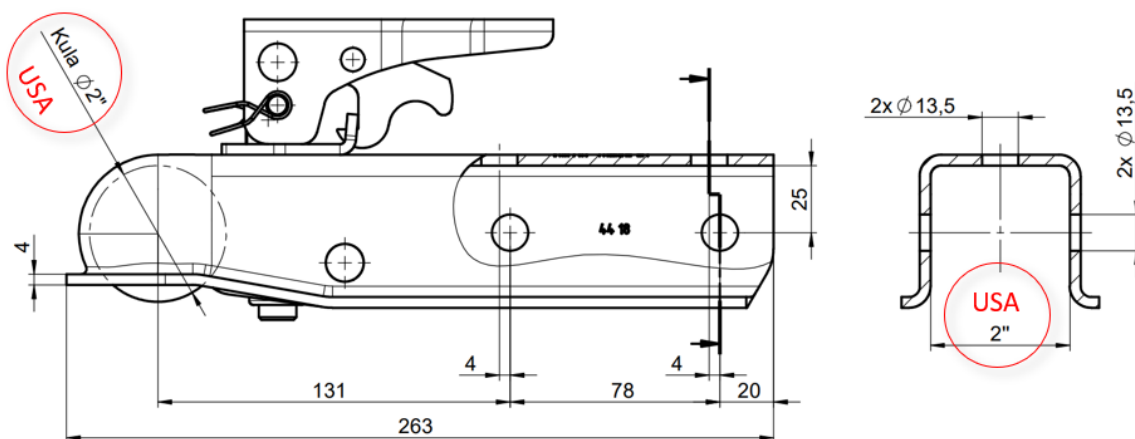
## NEWSLETTER 03.2025

### 2. COUPLING HEAD ZK-CL2-H



- compatible with a **2"** diameter ball
- high corrosion resistance ensured by the use of galvanized steel, guaranteeing durability for years
- resistance to cracking
- low unladen weight
- interchangeable components of the hitch mechanism, including the clamp, allow for an extended product life cycle
- the available connection allows mounting on a **drawbar with a diameter of 2"**
- guarantee of the highest quality - the ZK-CL2-H head meets the requirements of Regulation VESC-5 "Minimum requirements for coupling devices for motor vehicles and towing methods" and complies with the international standard SAE J684.

MGTW: 3500 LBS  
Tongue WT. : 500 LBS





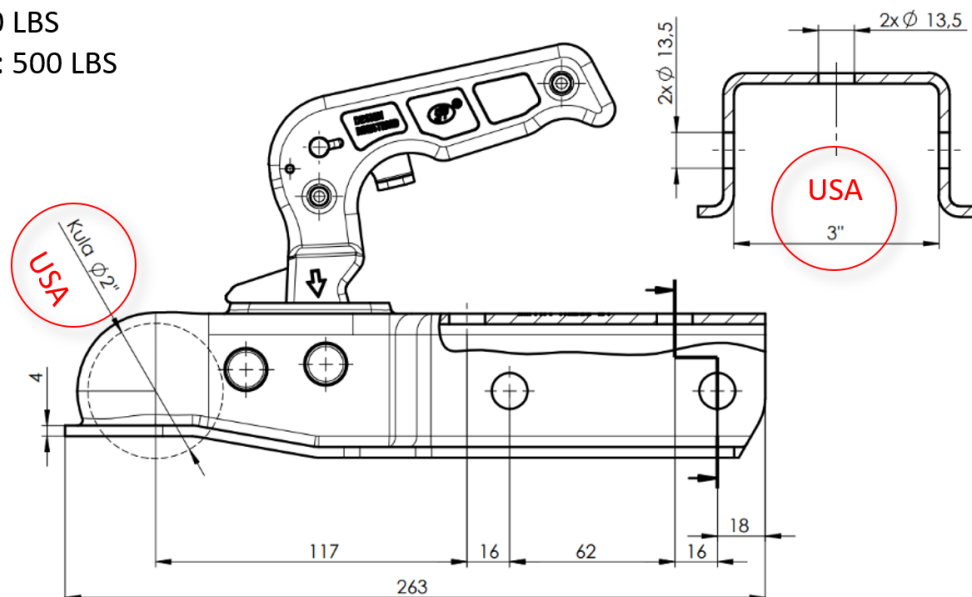
## NEWSLETTER 03.2025

### 3. COUPLING HEAD ZSK-CL2-M



- compatible with **2"** diameter ball
- high corrosion resistance ensured by the use of galvanized steel, guaranteeing durability for years
- resistance to cracking
- low unladen weight
- the available connection allows **mounting on a drawbar with a diameter of 3"**
- available heads in class II are designed for trailers with a **GVW of up to 3500 lbs** (1590 kg)
- available heads in class III are designed for trailers with a **GVW of 3500 to 5000 lbs** (2270 kg)
- made in Class II and III in accordance with Regulation VESC-5 "Minimum Requirements for Motor Vehicle Coupling Devices and Towing Methods" and in accordance with SAE J684.

MGTW: 3500 LBS  
Tongue WT. : 500 LBS





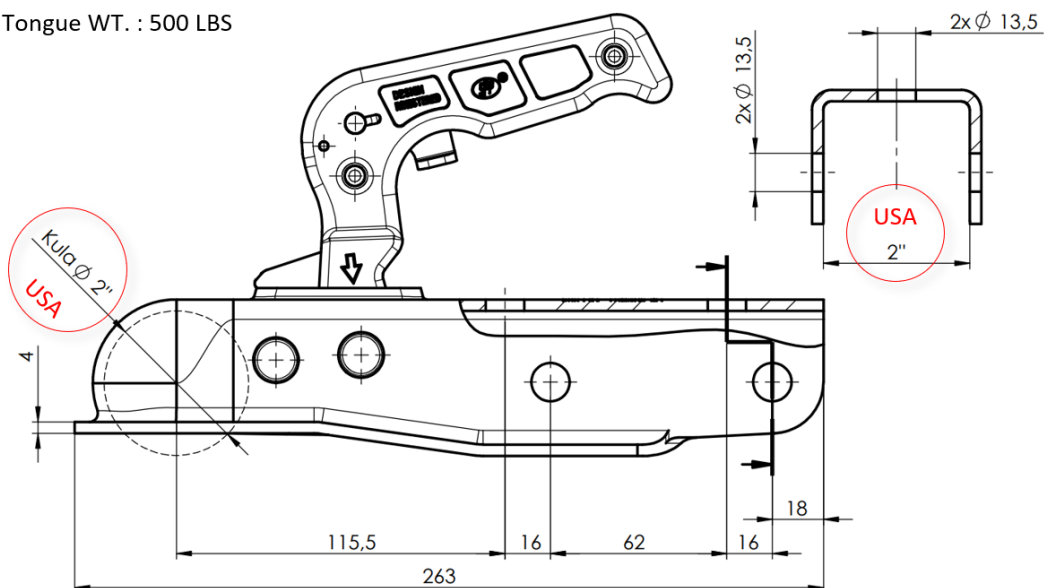
## NEWSLETTER 03.2025

### 4. COUPLING HEAD ZSK-CL2-H



- compatible with **2"** diameter ball
- high corrosion resistance ensured by the use of galvanized steel, guaranteeing durability for years
- resistance to cracking
- low unladen weight
- the available connection allows **mounting on drawbar with a diameter of 2"**
- available heads in class II are designed for trailers with a **GVW of up to 3500 lbs** (1590 kg)
- available heads in class III are designed for trailers with a **GVW of 3500 to 5000 lbs** (2270 kg)
- made in Class II and III in accordance with Regulation VESC-5 "Minimum Requirements for Motor Vehicle Coupling Devices and Towing Methods" and in accordance with SAE J684.

MGTW: 5000 LBS  
Tongue WT. : 500 LBS





## NEWSLETTER 03.2025

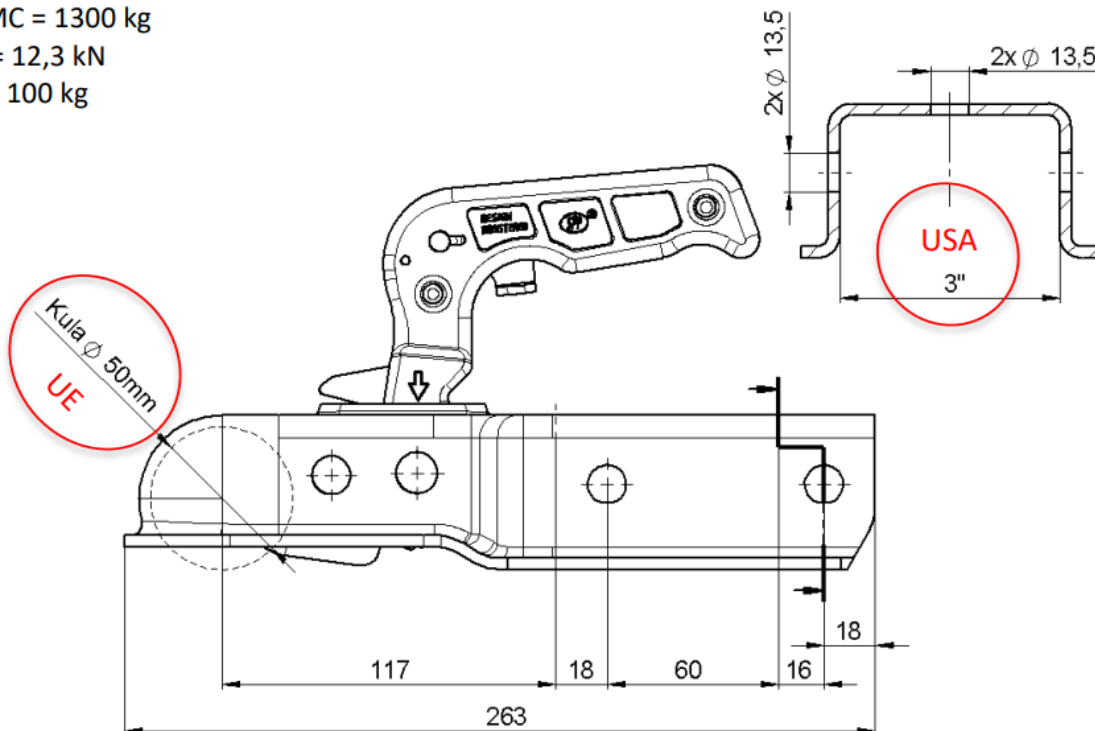
### 5. COUPLING HEAD ZSK-1300M-00-00



- coupling head ZSK-1300M-00-00 with 3" connection, adapted to the European standard ball fi 50mm.
- permissible total weight= **1300 kg**
- guarantee of quality - ZSK-1300M-00-00 has undergone rigorous testing and received the European Homologation of the RDW Institute



DMC = 1300 kg  
D = 12,3 kN  
S = 100 kg





## NEWSLETTER 03.2025

### 6. ACCESSORIES TO ENHANCE FUNCTIONALITY

- Fitted **SD-01** allows you to protect your car's paint from scratches
- **ZZ-03A** in painted version or **ZZ-03** in galvanized version with padlock protect the trailer from theft
- **ZK-ZN-CL2** - repair kit for 2-inch (2") heads - allows to replace worn parts of the mechanism including the pressure plate

