



Safe, Professional, Perfect



NEWSLETTER

1. As a result of the introduction of the new production technology:

"Production of the trailer axle driving unit, taking into account the new technology of quick conversion"

We have implemented significantly improved products - a rubber torsion axle, with a load capacity of 750, 1000, 1300 kg

ON-75; ON-1000; ON-1300

These are complete axles with a reinforced structure intended for cargo trailers, specialist trailers and slow-moving vehicles, as well as agricultural or orchard trailers. The production of the axle assembly in a new technology presents a completely new approach that guarantees increased strength parameters of the complete axle, control of the most important parameters, including the strength, toe-in and camber of the wheel and the tightening torque of the screws built into the assembly process, and thus increased safety.

The implementation of the new technology allows to shorten the process of preparation and production of an axle dedicated to specific customer requirements.

2. As a result of the introduction of the new production technology:

"Production of the trailer axle driving unit, taking into account the new technology of quick conversion"

We have implemented a completely new product: Trailer / vehicle independent wheel suspension assembly NZL-75 and NZR-75 with a load capacity of 750 kg.

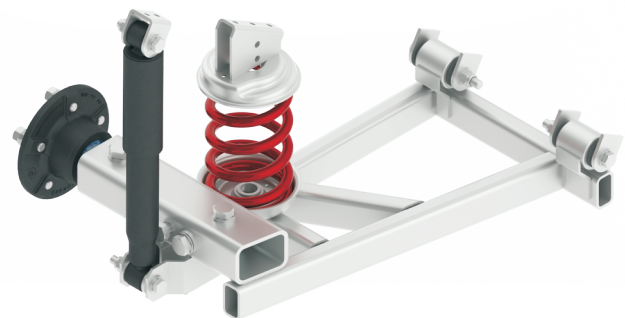
The new solution assumes the installation of an independent suspension for each trailer wheel, which significantly improves the suspension characteristics by extending the shock absorption effect to a distance of 100 mm, which will significantly improve driving comfort and enable the transport of elements requiring transport with soft shock absorption.

Thanks to the patented solution, the independent wheel suspension unit of the vehicle enables adjustment of the angular position of the bearing pin in the horizontal plane. The purpose of the regulation is to determine the determined toe-in of the trailer wheels by eliminating inaccuracies in the suspension assembly, and also by removing defects caused by suspension wear during trailer operation or deviations caused by defective geometry of its frame.

A significant advantage of the solution is also the ability to easily replace the worn bearing pin with the hub and replace them with new elements, thanks to which a significant extension of the life of the independent wheel suspension assembly is achieved.



1. Rubber torsion axle



2. Trailer / vehicle independent wheel suspension assembly