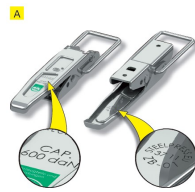


The Steelpress boards latches and bar for boards latches are made in accordance with standard ZN-001 :2010. They are manufactured from high quality carbon steel, which gives them durability and strength. Furthermore, in order to provide adequate anti-corrosive resistance, these products are electrolytically galvanized and varnished (without Cr VI).

1. Labeling

The Steelpress boards latches and bar for boards latches have detailed labeling determining the type of the product (Fig A). The side latches are additionally marked with a symbol indicating their acceptable load. If there is no load marking on the product please check the maximum load of the product directly in the attached table.



2. Assembly

In order to ensure correct functioning of a side latch with a clipper, correct installation is necessary (fig.B), apart from compliance with the acceptable loads.

The place where the clamp of a side latch 2 touches the clipper 4 must be located below the lever rotation axis 1 - in the figure the place of contact is marked with 3 . Distance B must always be greater than distance A.

The radius of the bars for boards latches must be on the frame of the trailer 5.

The incorrect method of installation has been presented in fig. C.

Some versions of side latches have an additional protection in the form of a bolt or a cotter pin.

To connected the parts with the trailer please use the screws or rivets with the diameter and position of all holes.

3. Compensation

A new line of side latches with compensation enables automatic liquidation of clearance between the latch and the clipper (fig. D). Application of latches with compensation allows to alleviate vibrations of the sides, which significantly improves their strength and prolongs the period of safe use of the trailer.

4. User's manual - In order to close / open the parts safely one should:

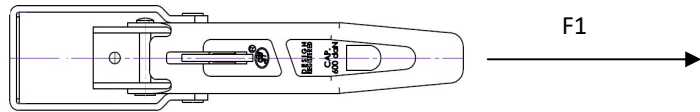
- Make sure that there is a vacant space round a side latch with a clipper, frame and other bodywork elements.
- The trailer should be loaded properly, without exceeding the permissible total weight, load should be prevented from moving.
- To make sure that the a side latch with a clipper is properly fixed it is important to check the connection according to drawing B
- If a part should get damaged or deformed in an accident or because of overload, it should instantly be replaced.
- Proper maintenance will provide easy exploitation and proper functioning of a side latch with a clipper. To ensure that all joints and bearings should be lubricated and cleaned. Loss of the protective coating should be replenished
- Being of great importance for road safety, should not be altered in any way.

5. Capacity of the parts – direction force

Boards latches - group 1

- longitudinal load

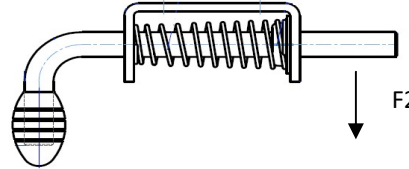
ZB-01; ZB-02; ZB-03; ZB-04; ZB-05;
ZB-06; ZB-07; ZB-11; ZB-13; ZB-14;
ZB-15; ZB-12; ZB-16



Boards latches - group 2

- transverse load

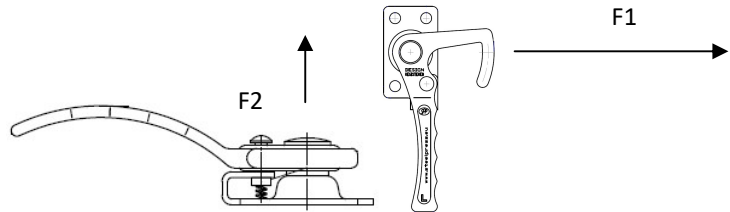
ZB-08; ZB-09; ZB-10;



Boards latches - group 3

- longitudinal / transverse load

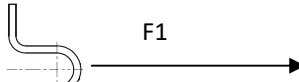
ZB-12; ZB-16



Bars for boards latches – group 2

- longitudinal load

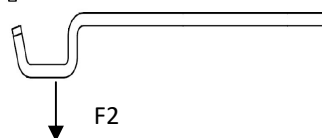
Z-08, Z-09; Z-10; Z-11A



Bars for boards latches – group 1

- transverse load

Z-01; Z-01A; Z-02; Z-02A; Z-03; Z-05;
Z-06; Z-07; Z-11; Z-15



Bars for boards latches – group 3

- longitudinal / transverse load

Z-12; Z-16

